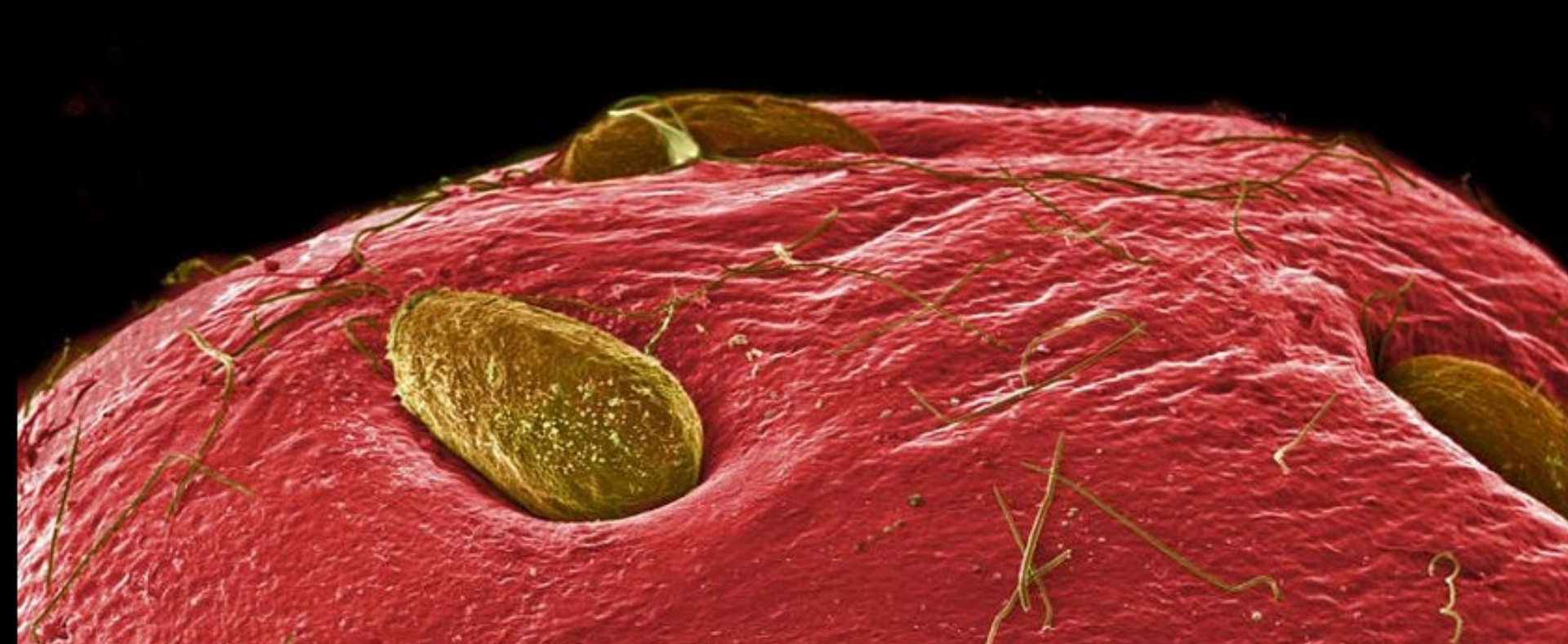


**Round 1-
Under the
microscope!**



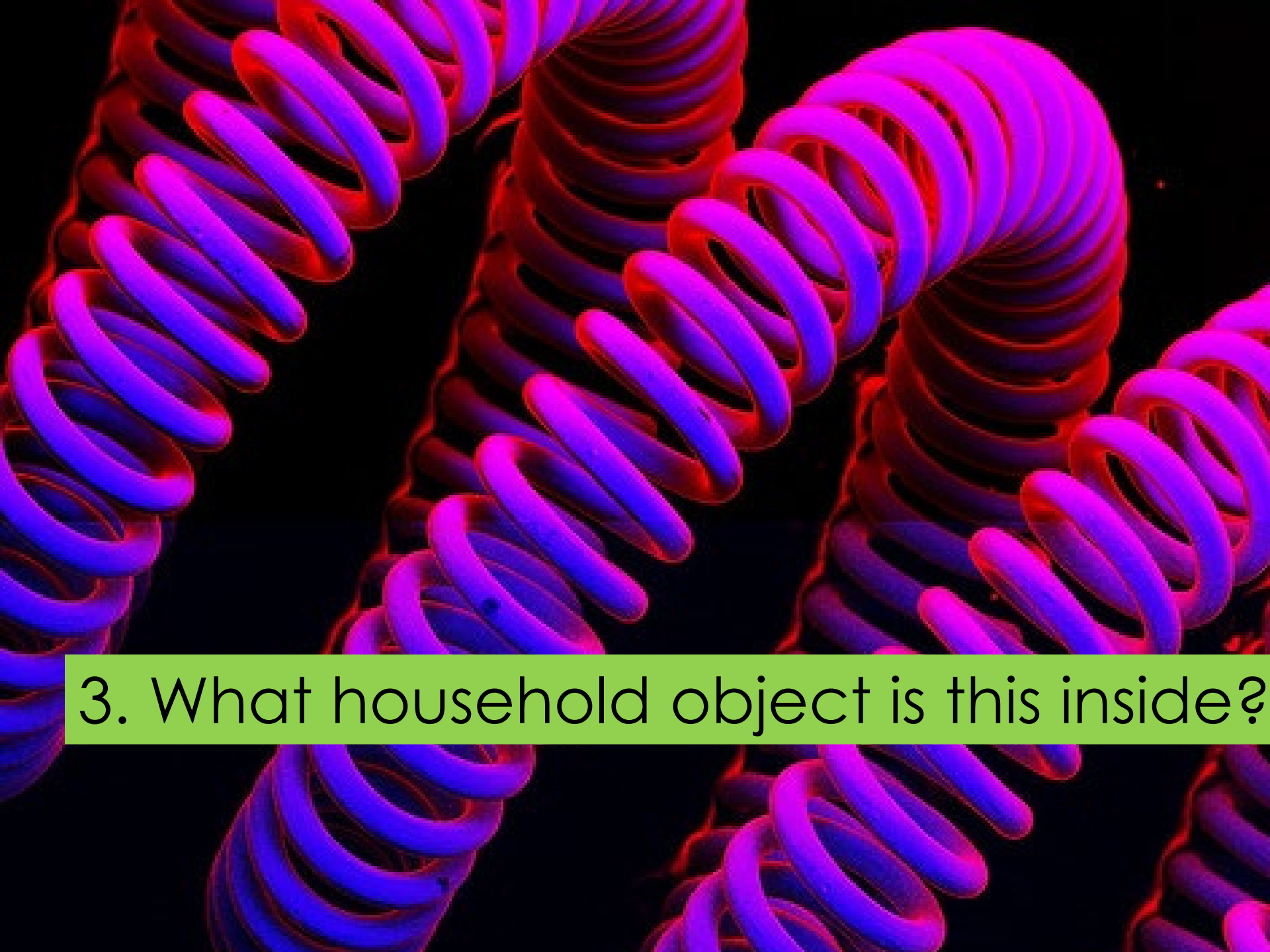


1. What is the name of this common food





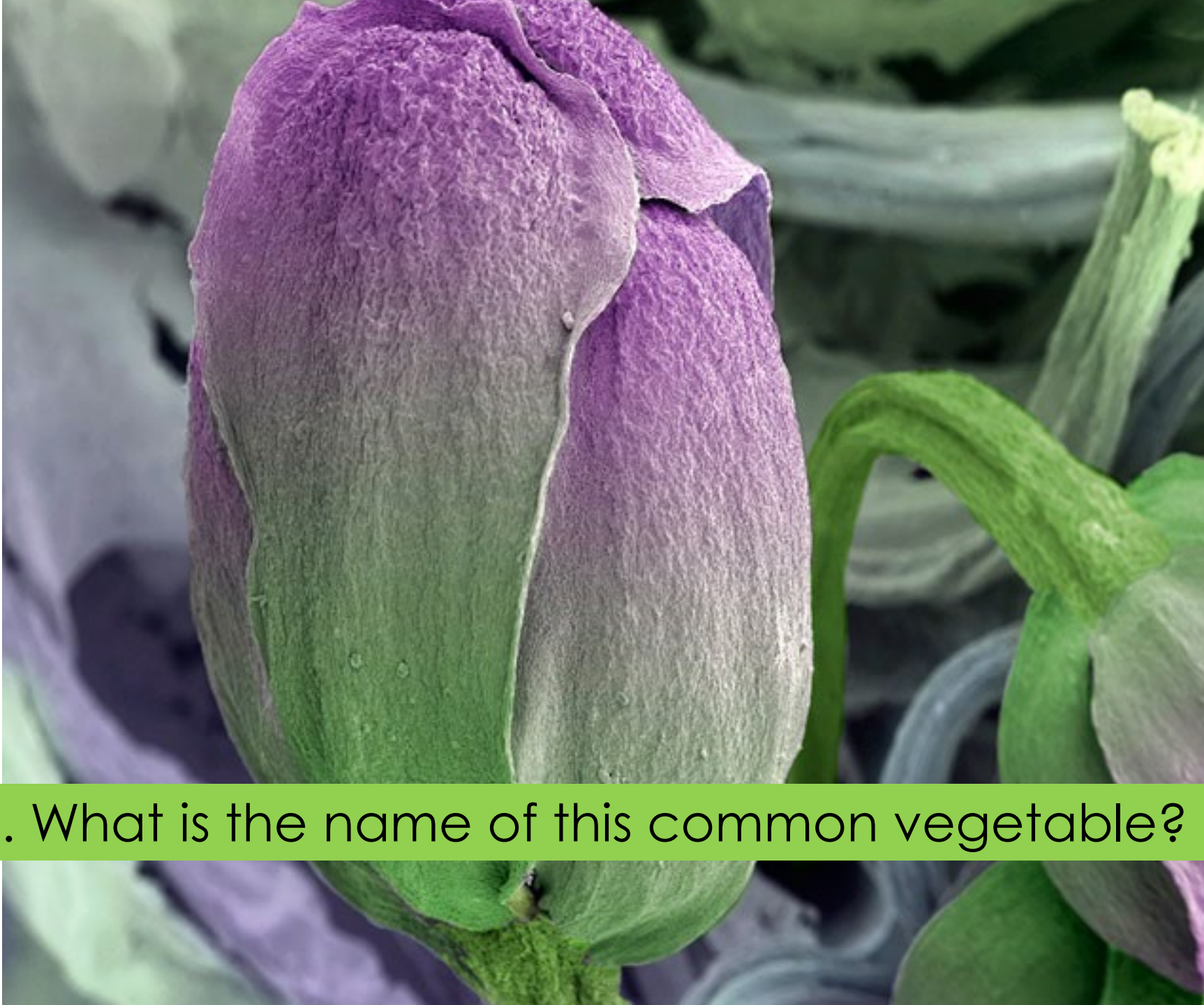
2. What part of the human body is this?



3. What household object is this inside?



4. What is this? (hint: is it fully grown?)



5. What is the name of this common vegetable?



6. What is the name of this common food?



7. What is this?!



8. What is this creature?

Bonus - What has this creature done to look like this?



9. What is this?



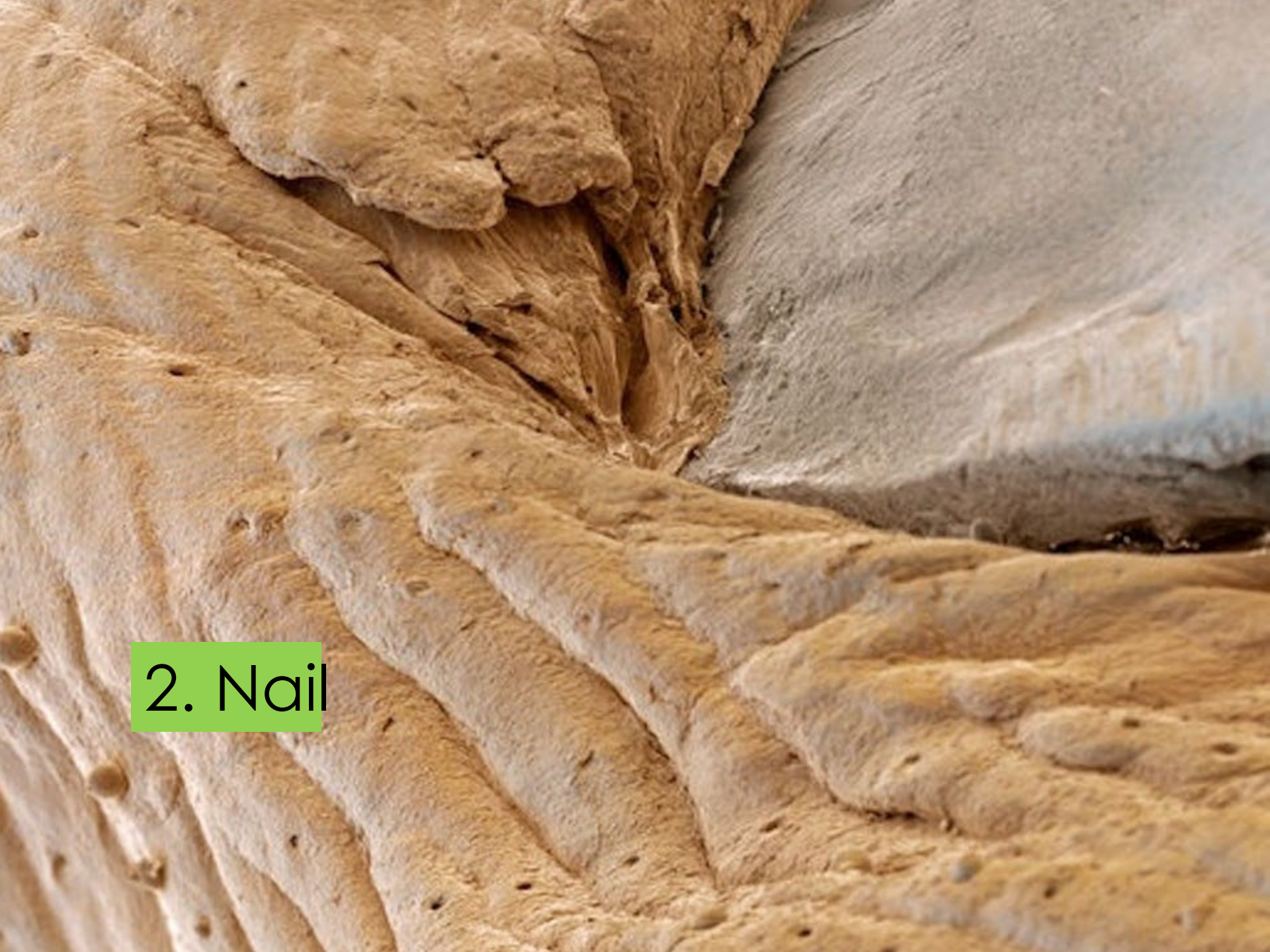
10. What is this?

**Round 1-
Under the
microscope! –
the answers**



A scanning electron micrograph (SEM) of a strawberry surface. The image shows a highly textured, reddish-pink surface with several large, oval-shaped achenes (seeds) embedded in it. The achenes have a rough, granular texture. The surface is covered with numerous fine, hair-like trichomes that are scattered across the area. The background is dark, making the strawberry's surface stand out.

1. Strawberry



2. Nail



3. Filament inside a bulb

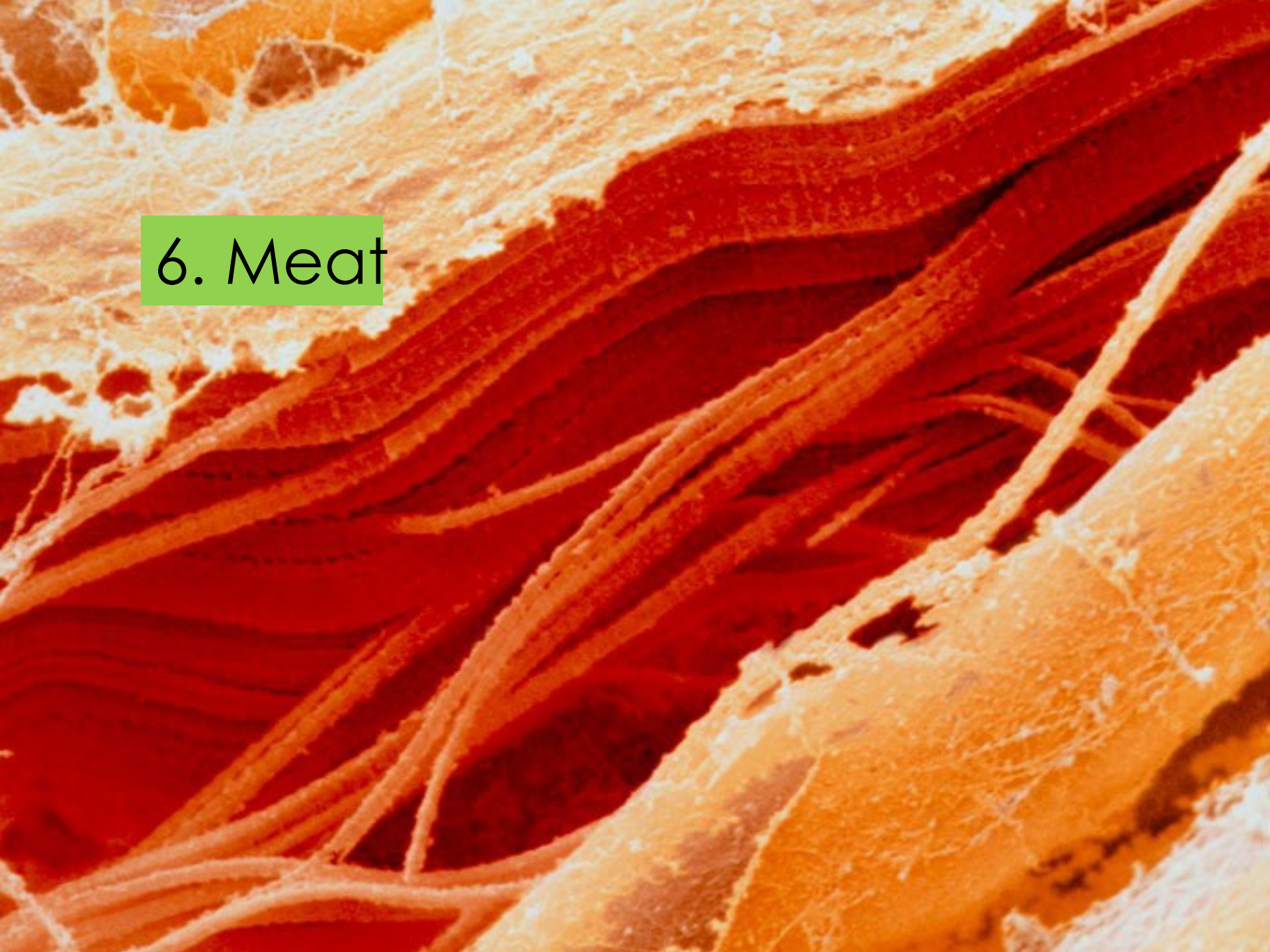


4. (Zebra) fish embryo



5. Broccoli

6. Meat



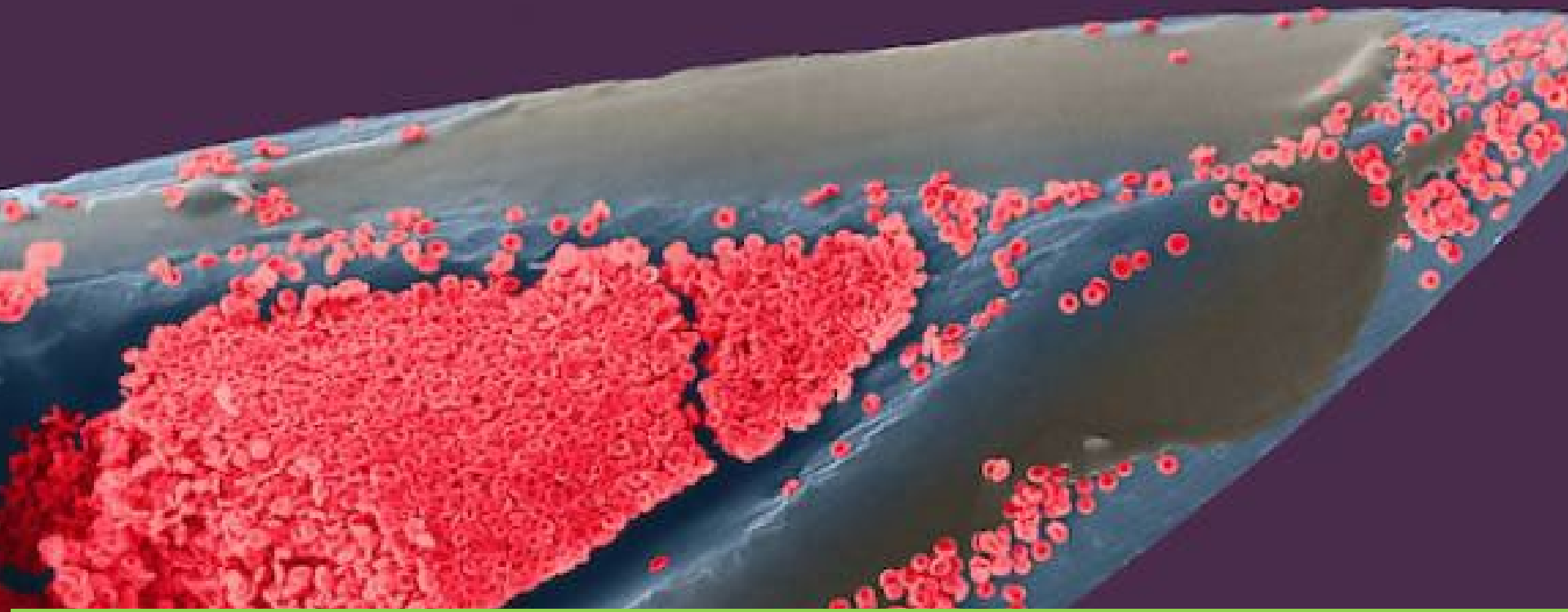


7. maggot



8. tick

Bonus –it has just sucked blood!



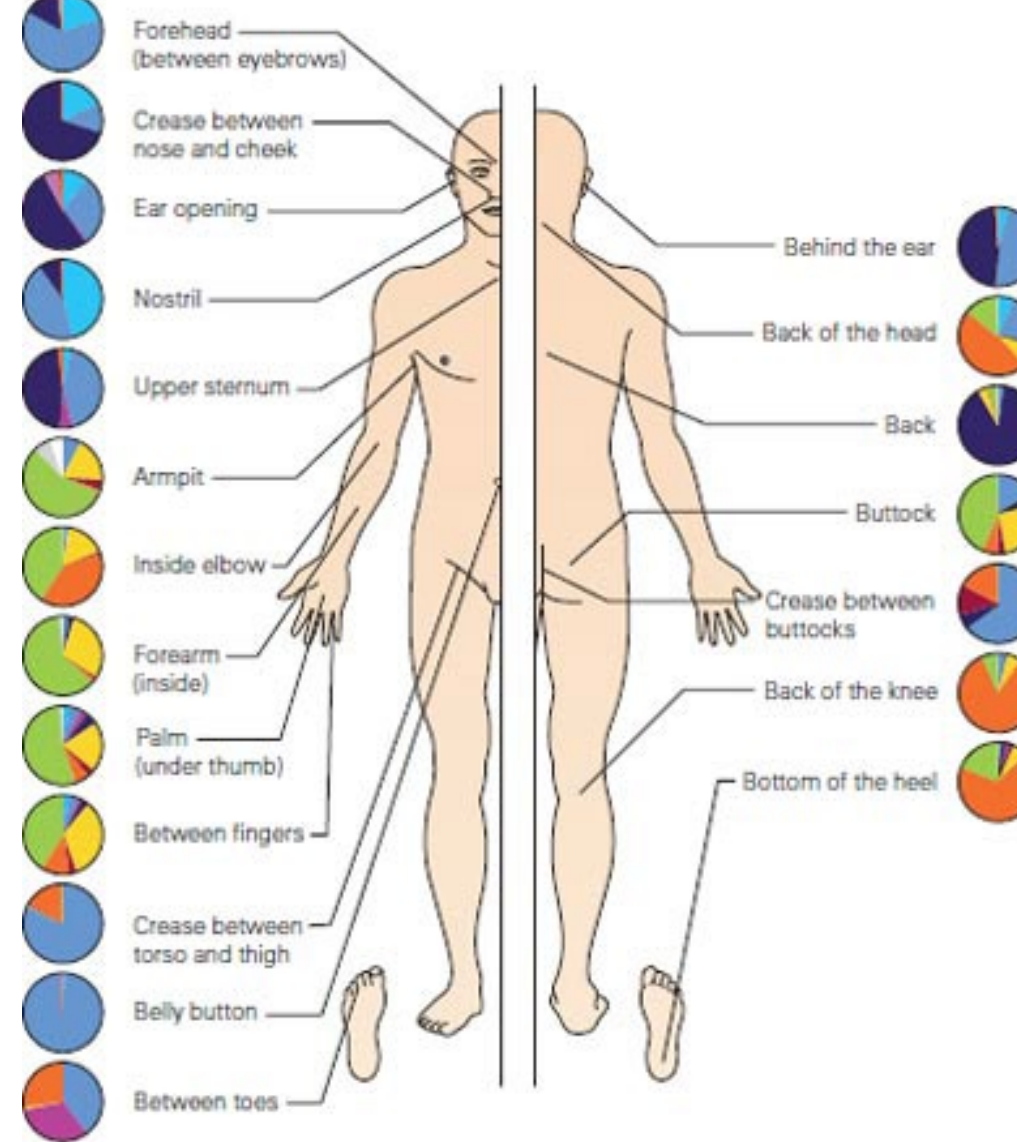
9. Red blood cells on the end of a needle



10. snowflake

Round 2- Amazing facts!





1. How many bacteria does the human body contain versus the number of cells?

- a) A quarter as many
- b) Half as many
- c) The same number
- d) Ten times as many.

Types of Bacteria

Actinobacteria

- Corynebacteriaceae
- Propionibacteriaceae
- Micrococciaceae
- Other Actinobacteria

Bacteroidetes

Cyanobacteria

Firmicutes

- Staphylococcaceae
- Other Firmicutes

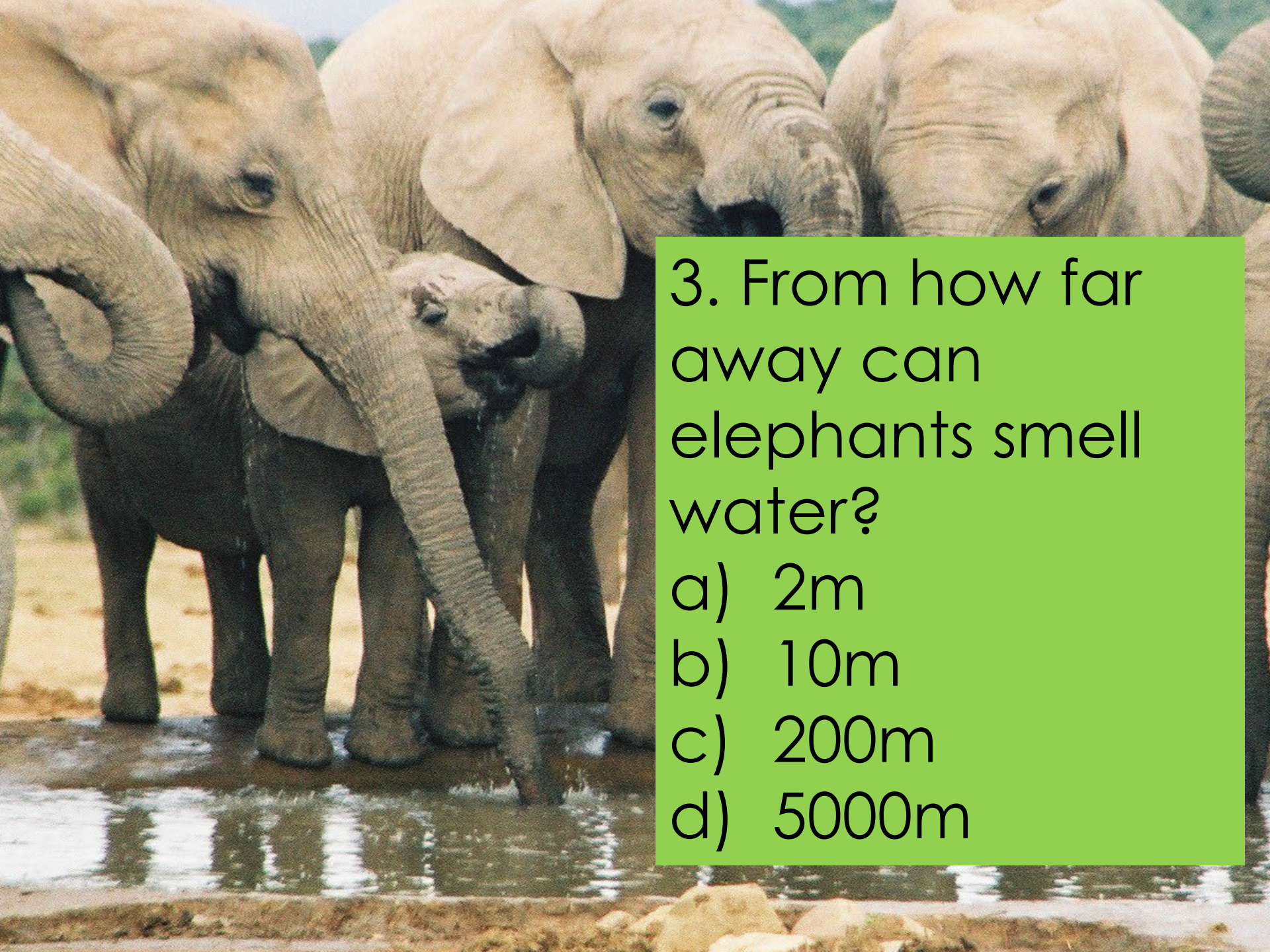
Proteobacteria

- Bacterial types contributing <1%
- Unclassified



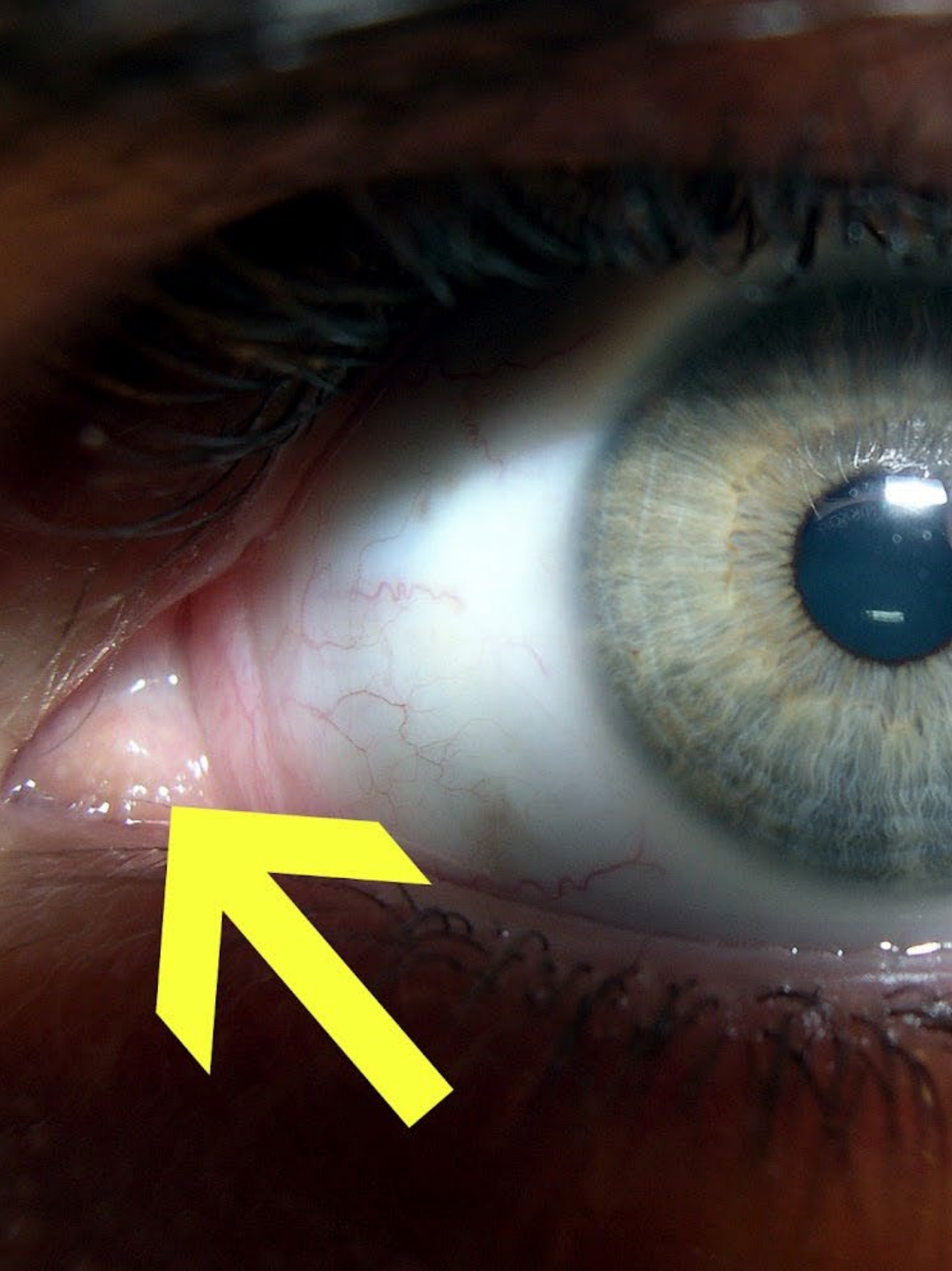
2. How many tigers are left in the world?

- a) 3200
- b) 6500
- c) 10,000
- d) 23,000



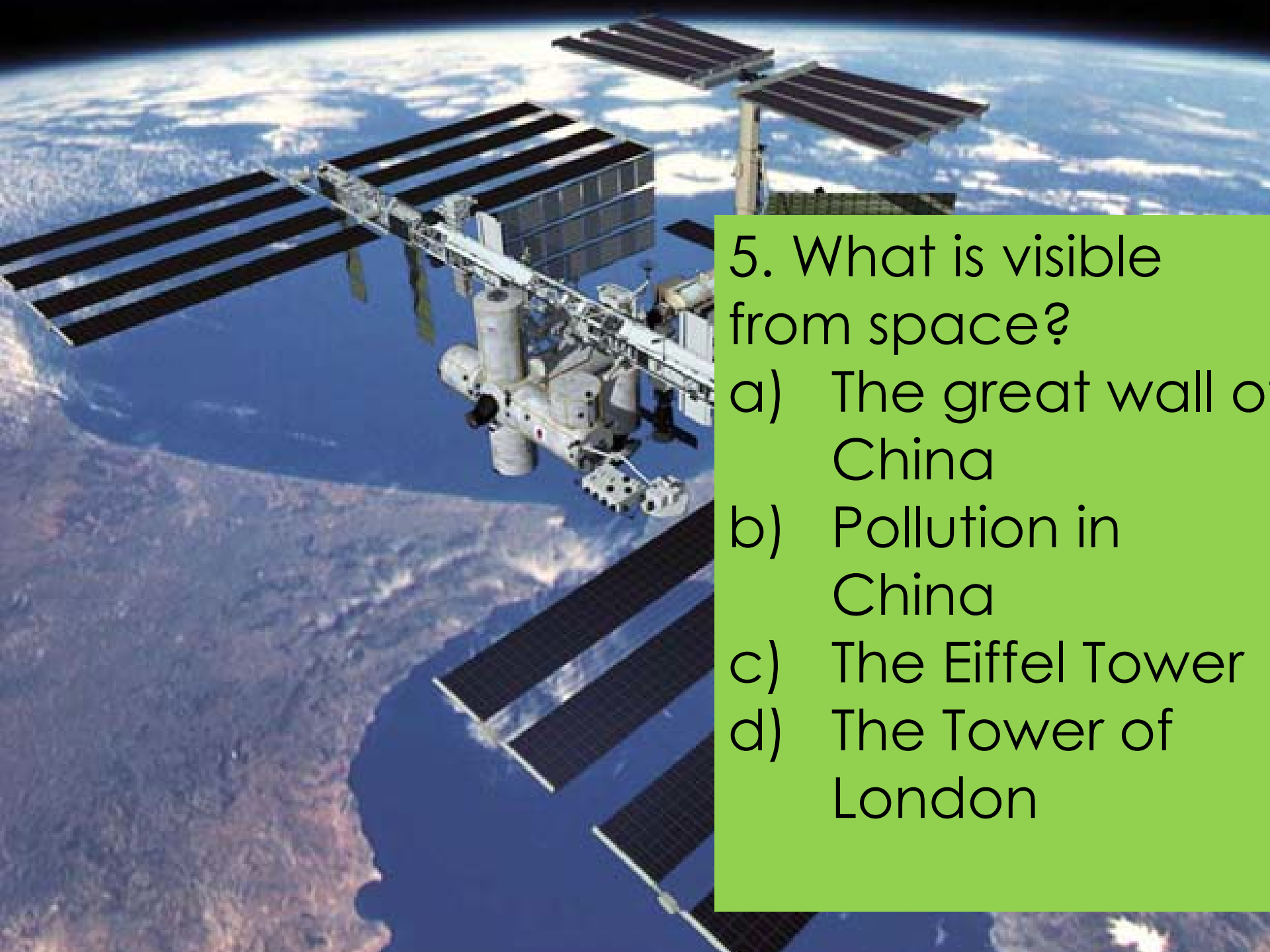
3. From how far away can elephants smell water?

- a) 2m
- b) 10m
- c) 200m
- d) 5000m




4. This is the remains of third eyelid, left over from when we evolved. Reptiles still have this as a working third eyelid. What does it do in reptiles?

- a) Help them blink
- b) Protect them when they are underwater
- c) Scare predators?



5. What is visible from space?

- a) The great wall of China
- b) Pollution in China
- c) The Eiffel Tower
- d) The Tower of London

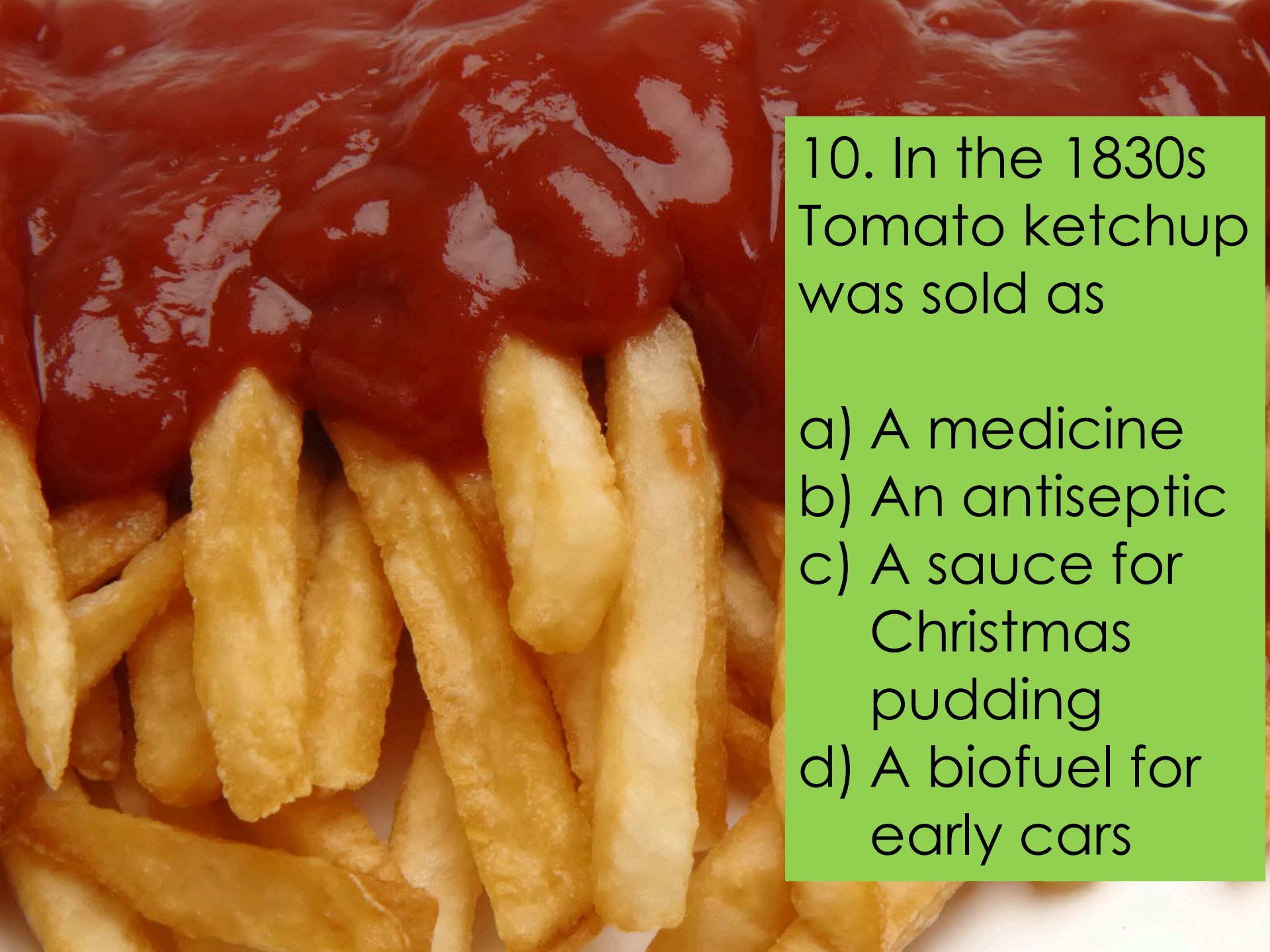


8. Humans produce enough saliva in their lives to fill

- a) 3 bath tubs
- b) 2 swimming pools
- c) 10 pint glasses
- d) 3 Jacuzzis



9. It is impossible to
- a) Rub your tummy clockwise whilst rubbing your head anti-clockwise
 - b) Lick your own elbow
 - c) Lick your own knee

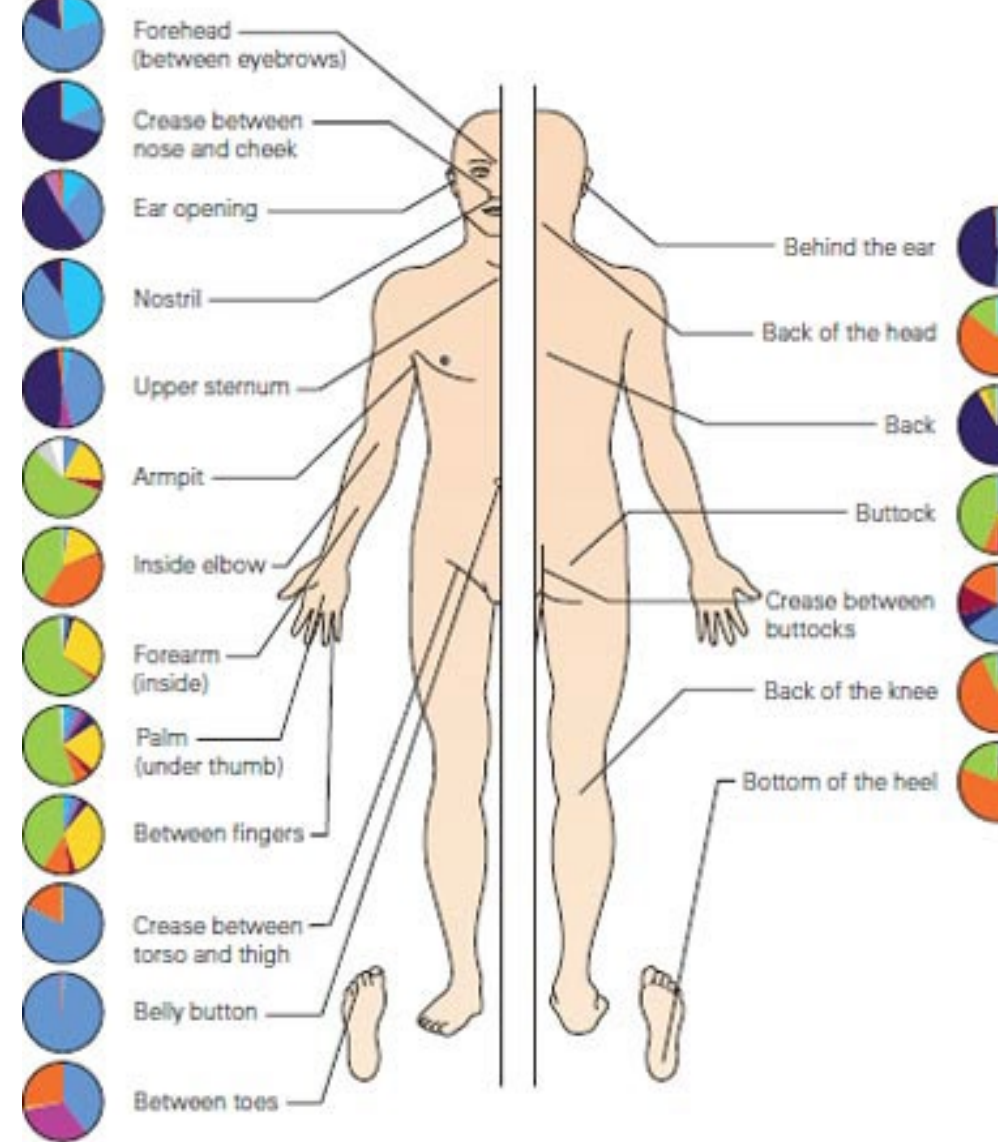


10. In the 1830s
Tomato ketchup
was sold as

- a) A medicine
- b) An antiseptic
- c) A sauce for
Christmas
pudding
- d) A biofuel for
early cars

Round 2- Amazing facts! - answers





1. How much bacteria does the human body contain compared to cells?
 - a) A quarter as many
 - b) Half as many
 - c) The same number
 - d) Ten times as many.**

Types of Bacteria

Actinobacteria

- Corynebacteriaceae
- Propionibacteriaceae
- Micrococcaceae
- Other Actinobacteria

Bacteroidetes

Cyanobacteria

Firmicutes

- Staphylococcaceae
- Other Firmicutes

Proteobacteria

- Bacterial types contributing <1%

Unclassified



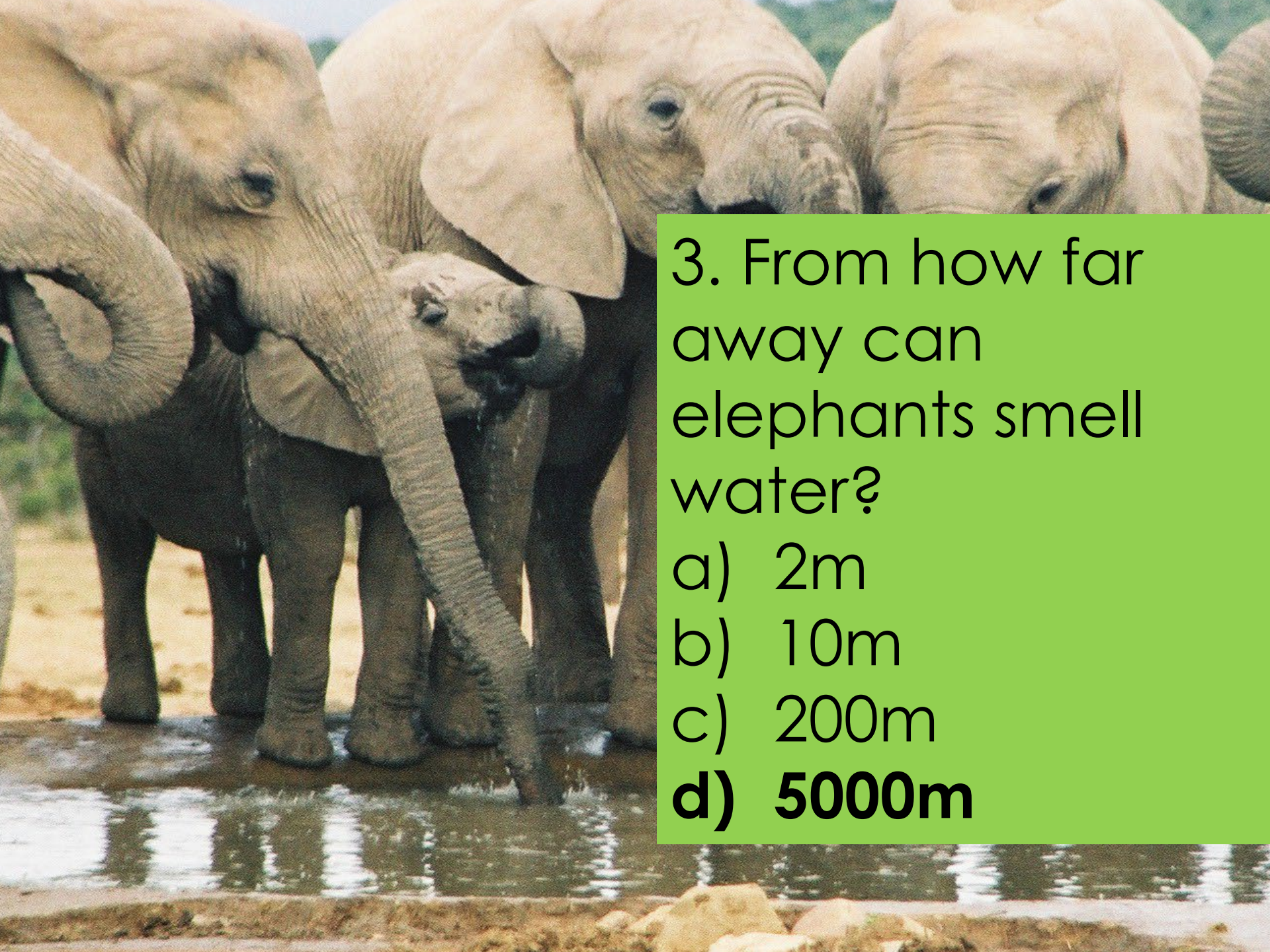
2. How many tigers are left in the world?

a) 3200

b) 6500

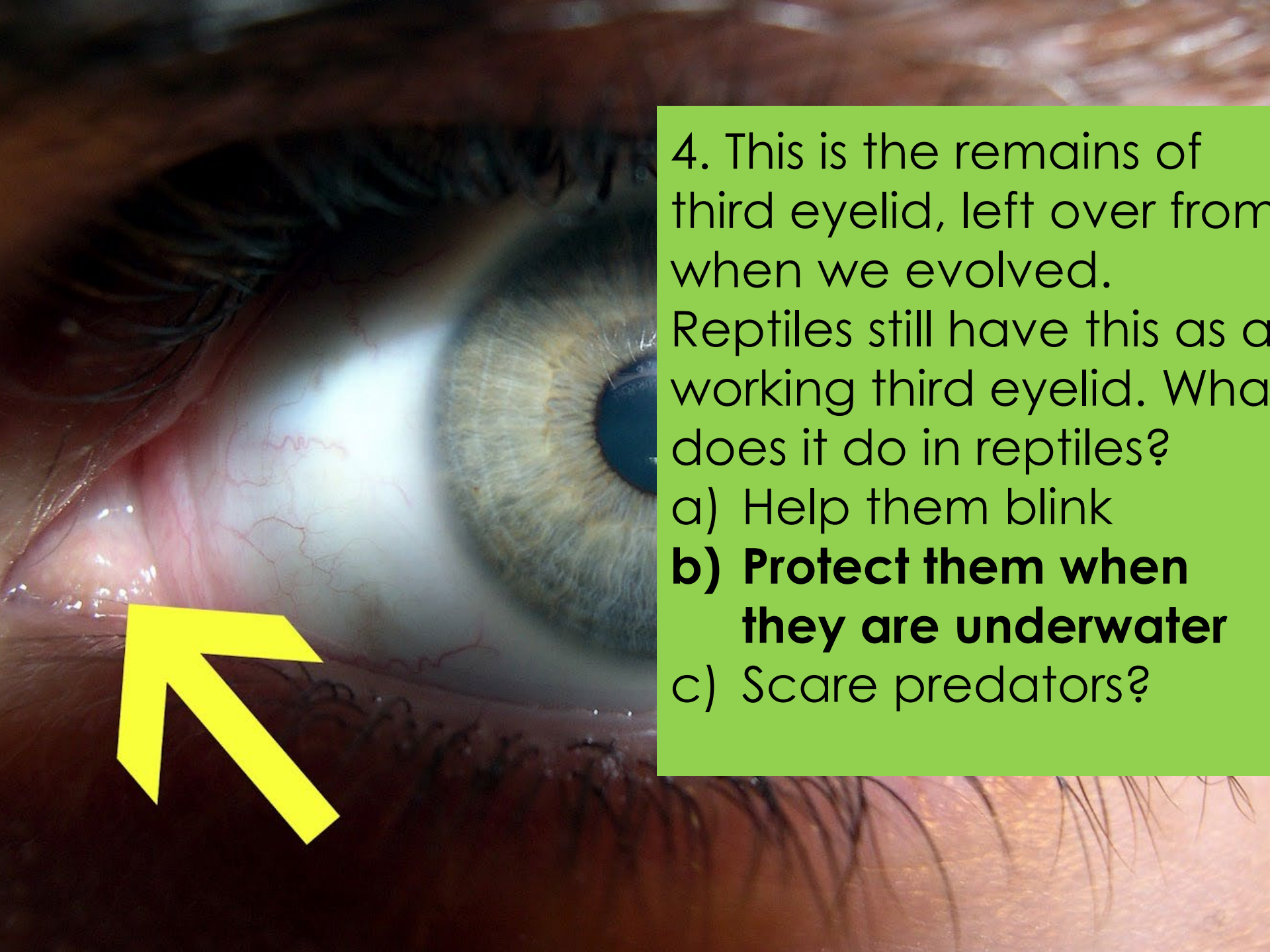
c) 10,000

d) 23,000



3. From how far away can elephants smell water?

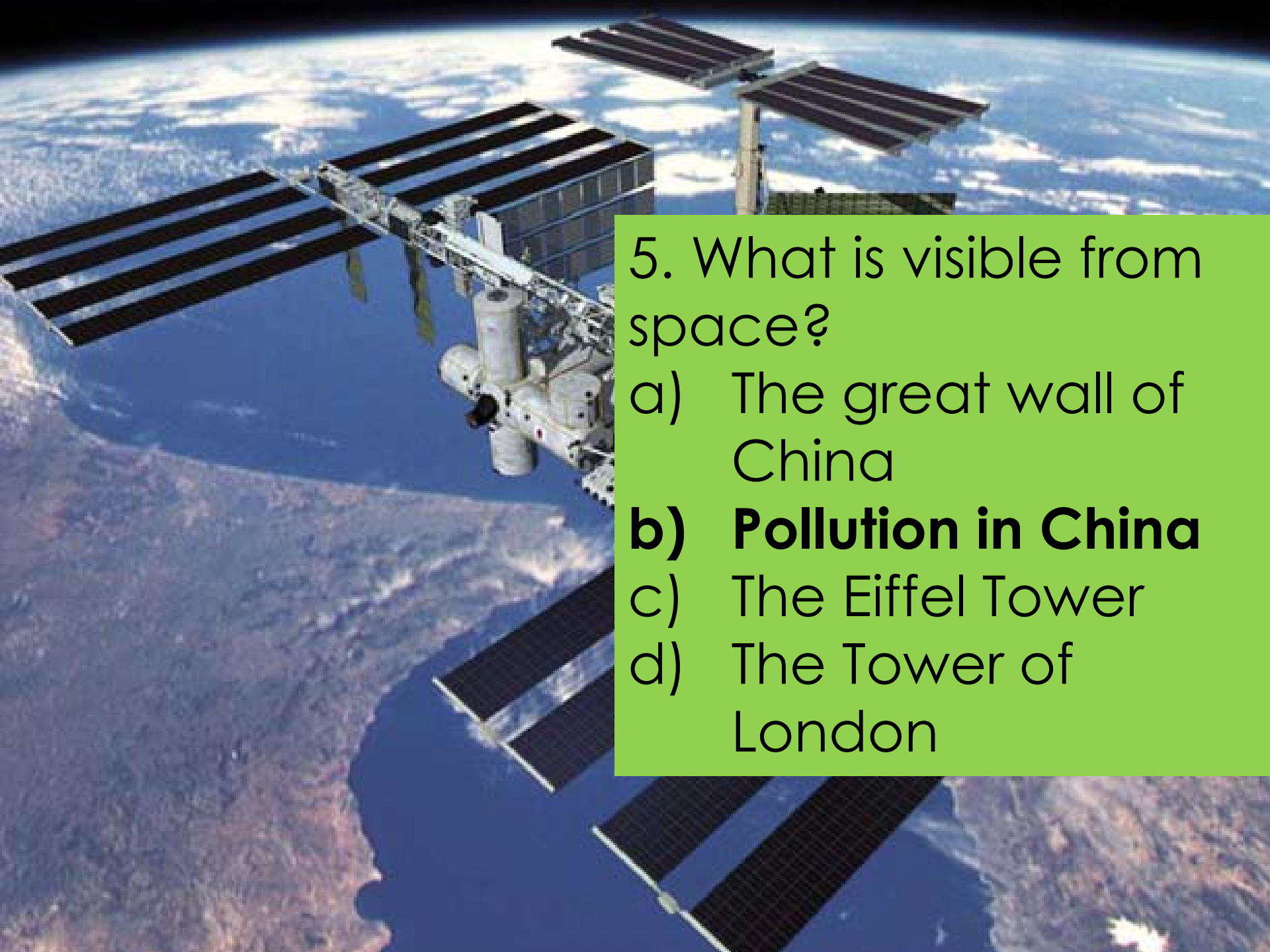
- a) 2m
- b) 10m
- c) 200m
- d) 5000m**



4. This is the remains of third eyelid, left over from when we evolved.

Reptiles still have this as a working third eyelid. What does it do in reptiles?

- a) Help them blink
- b) Protect them when they are underwater**
- c) Scare predators?



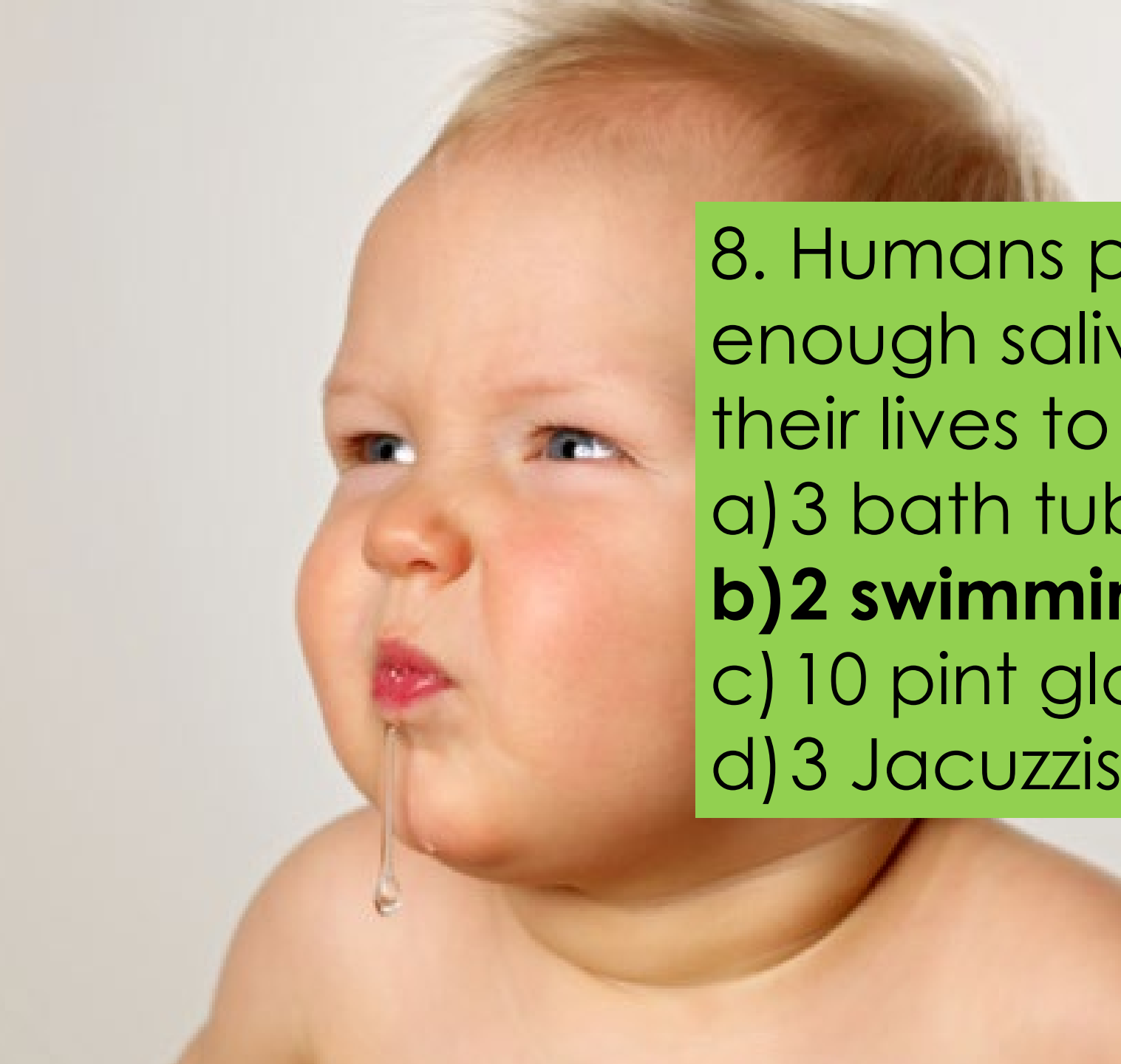
5. What is visible from space?

a) The great wall of China

b) Pollution in China

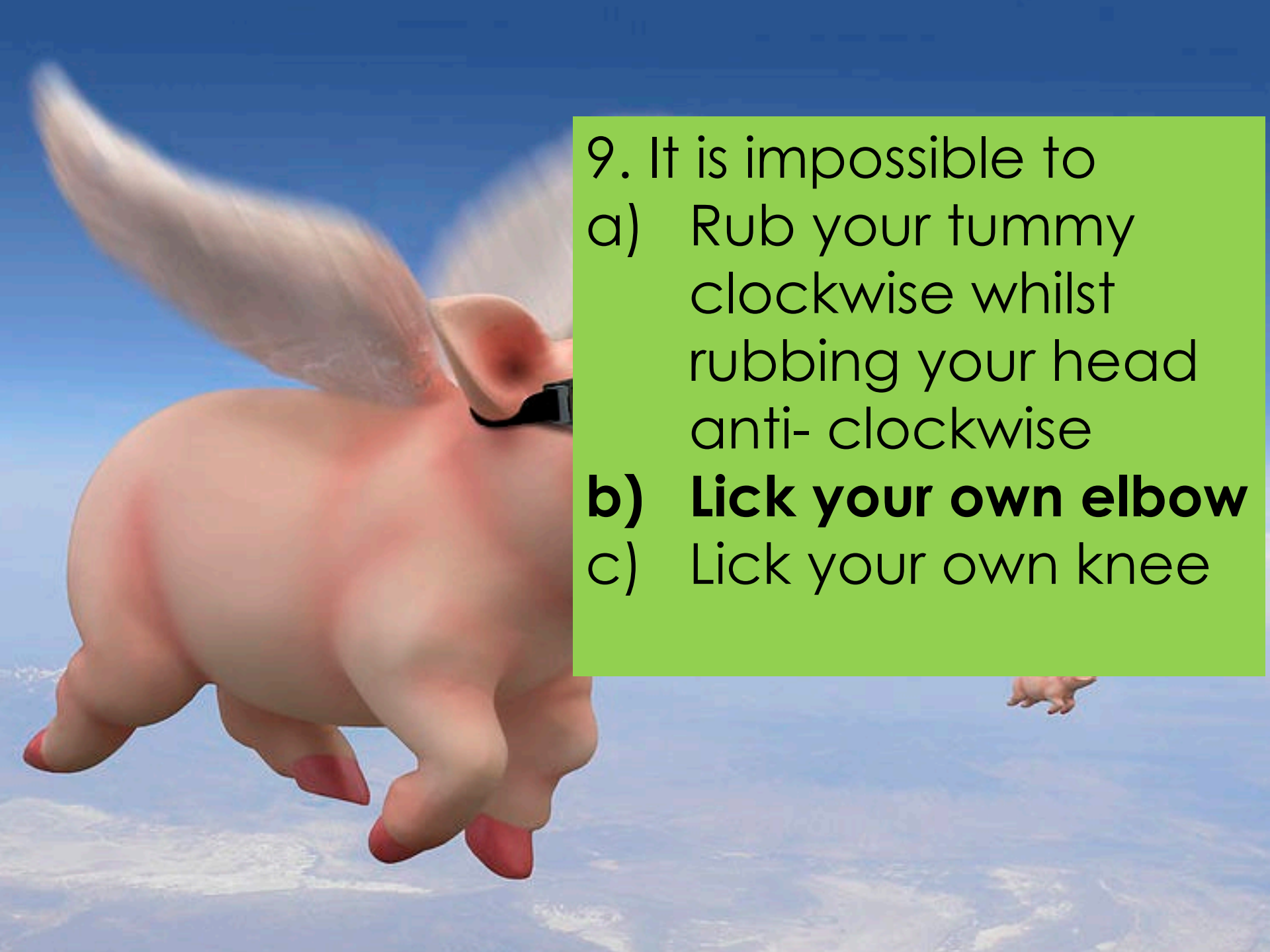
c) The Eiffel Tower

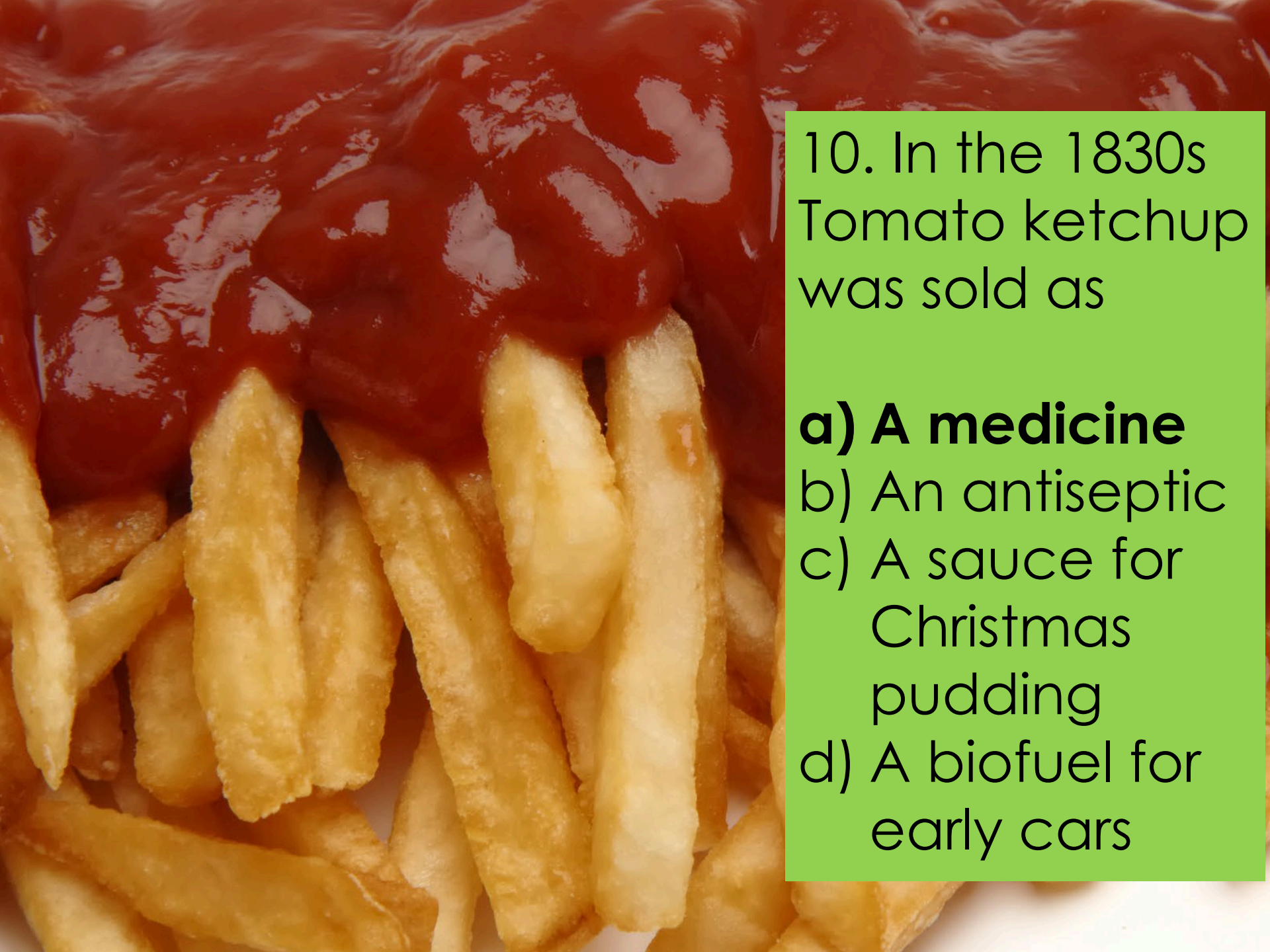
d) The Tower of London



8. Humans produce enough saliva in their lives to fill

- a) 3 bath tubs
- b) 2 swimming pools**
- c) 10 pint glasses
- d) 3 Jacuzzis

- 
- A pink pig wearing sunglasses is flying through the sky. The pig is the central focus, with its wings spread and its body angled downwards. The background is a clear blue sky with some light clouds. The pig's feet are visible, and it appears to be in motion. The overall scene is whimsical and surreal.
9. It is impossible to
- a) Rub your tummy clockwise whilst rubbing your head anti- clockwise
 - b) Lick your own elbow**
 - c) Lick your own knee



10. In the 1830s
Tomato ketchup
was sold as

- a) A medicine**
- b) An antiseptic
- c) A sauce for
Christmas
pudding
- d) A biofuel for
early cars