



### Message from the Headteacher

*'Let the peace of Christ rule in your hearts, since as members of one body you were called to peace. And be thankful.'*  
(Colossians 3:15)

This week I was delighted to receive a 'Thank you' from the Putney Gives donation drive for our local foodbanks. The drive was organised by Mrs Fleur Anderson, MP for Putney, Roehampton and Southfields, and involved local schools, churches, Southfields' Mosque and the Synagogue. Mr Alex Shoderu, our Chaplain, and Librarian, Ms Rachel Goodhart, dropped off donations from Saint Cecilia's pupils, students and families at the Wandsworth foodbank warehouse. Once sorted, essential goods were taken to St Paul's Pantry and the Alton Playschool, which was very low on nappies.

Together, the community donated 604Kg – nearly two thirds of a tonne! If you were able to support – thank you. If you are in need, please visit St Paul's Pantry at St Paul's Church, Wimbledon Parkside on Augustus Road, between 6.30pm and 8pm every first and third Thursday of the month. No referral is necessary, and all are welcome.



The Putney Gives team have asked me to pass on a huge 'thank you' to you all.

God bless,

**Renata Joseph**  
Headteacher

### Chaplain's Corner

*'But the fruit of the Spirit is love, joy, peace, patience, kindness, goodness, faithfulness, gentleness, self-control'*  
(Galatians 5:22-23)

Dear Parents and Carers,

Welcome back for the last half term of the year. I hope you had a great break over half term and made the most of the sunshine.

One of the big questions we've been thinking about in our SIAMS team this year (Statutory Inspection of Anglican and Methodist Schools) has been, 'what is our definition of spirituality or spiritual development?'

Spirituality is such a broad term, and it can therefore be defined in many different ways. We want to simplify it by rooting it in the 'Fruit of the Spirit.' This is already a familiar concept with our pupils and students and is firmly rooted in our Christian ethos and identity as a school.

I have therefore decided to revisit the Fruit of the Spirit as our theme for this last half term of the year. The goal for this series of Collective Worship is to help everyone reflect on the year they are completing and look forward to the year that is to come, using the Fruit of the Spirit as a framework.

I will be keeping you all in my prayers throughout this last half term; for God to give you all the love, wisdom, creativity and

energy that you need in your roles.

So we can all pray together, we have an evening parents' prayer meeting coming up on Monday 12<sup>th</sup> June. Details are:

**Parents' Prayer:** 12<sup>th</sup> June at 7.45pm. Due to the constraints of Zoom meetings, this will be a 40-minute meeting.

**Meeting ID:** 384 874 8823  
**Password:** Romans832

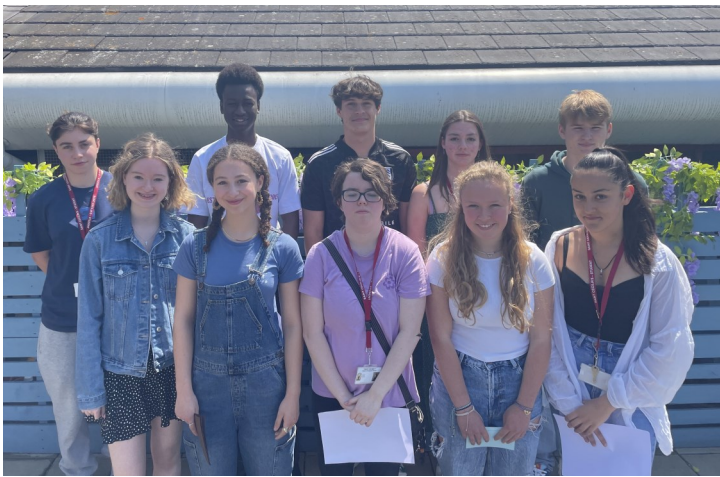
Outside of this, please don't hesitate to drop me a message if I can be of support in anyway. I think I have previously shared this [very helpful resource page from Care for the Family](#).

And finally this week, I'd particularly like to highlight the series of [short practical videos on a range of subjects](#) to support your teenager.

Blessings to you and your family.

**Alex Shoderu**  
School Chaplain

## Head Girl and Head Boy Application Process



We have started recruiting for next year's Head Girl and Head Boy. The process involves writing a letter of application, delivering a four-minute speech to the Sixth Form body, being interviewed by Mrs Joseph, Mr Bishop and me, followed by a student vote using a single transferable vote system.

We are delighted to have such a strong field of students who put themselves forward this year. This year's Head Girl and Head Boy candidates (pictured left):

Back row: **Anna-Maria A, Ezekiel O, Jacob R, Grace E and Edward N**

Head Girl: **Ella M, Layla A-S, Hollie H, Olivia C and Samara C.**

**Joanne Osborn**

**Sixth Form Year Leader and Curriculum Team Leader for Geography**

## Year 12 Geographers

Year 12 Geography students study Urban and Rural Regeneration as part of their A Level specification. This week, we visited the contested space that is Battersea Power Station. Our prior reading for the visit included Frank Hearnshaw's article '*A Case Study of Disastrous Urban Regeneration*' and Wandsworth Council's published piece '*London's Newest and Most Exciting Residential Business District*'.

We visited the newly installed museum and carried out a range of geographical fieldwork techniques to assess the impact of the development and trial out valuable skills in preparation for the Non-Examined Assessment (coursework). The results of the research, and the visit itself, provided us with valuable discussions about the impact of regeneration on our community spaces. Opinion was divided as to whether Battersea Power Station can be deemed 'successful.'

**Joanne Osborn**

**Sixth Form Year Leader and Curriculum Team Leader for Geography**



## Year 12 Geographers Investigate Further



As part of the A Level specification, students learn about the controversial nature of some regeneration projects leading to 'contested spaces' and NIMBY (Not In My Back Yard) viewpoints.



One such project, local to the school, is All England Lawn Tennis and Croquet Club's planned expansion of its site to build 38 new tennis courts, a new

stadium and to convert the Wimbledon Park Golf Club into a 23.2 acre public park. This has raised several concerns by different key players about the impact on the local community.

We were given an informative tour of the new site and parkland by the Head Landscape Architect. We also met a few geographers who were involved in the project, giving us an insight into the wide range of careers that geography graduates can have. After this, students enjoyed a visit to centre court and the museum.

**Joanne Osborn**  
Sixth Form Year Leader and Curriculum Team Leader for Geography

## Laws of Motion

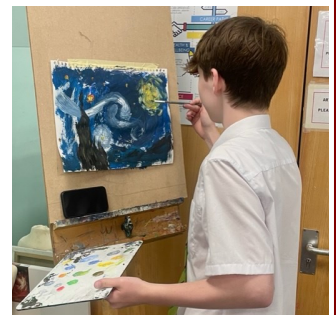


In science lessons, pupils have been learning about Newton's three laws of motion. These laws are fundamental. They allow NASA to calculate the trajectory of a space shuttle to the moon and allow engineers to accurately design and build cars, roller coasters, bridges and skyscrapers. Looking a bit dishevelled from imitating collisions with other pupils, **Ethan F** (Year 10) decided to try on some ice hockey equipment to think about how these laws apply when two ice hockey players collide. Even though his ice hockey days are probably over before they even began, hopefully his understanding of Physics has increased!

**Richard Leitch**  
Teacher of Science

## Van Gogh Style

**Liam W** in Year 10 is pictured right, hard at work. He is painting in the style of Van Gogh as part of his GCSE coursework project on Order/Disorder. He's using acrylic paints to recreate the artist's 'Starry Night.' He has copied the style of thickly applied paint with expertise to use in his own work.



**Daisy Bernard**  
Teacher of Art and Design

## Patisserie Chefs in the Making



For our French cooking competition over half term, **Mehdi U** and **Sami U** in Year 8 used their cookery skills to make a traditional and delicious French dessert called 'Charlotte aux Poires'. Their result was very impressive.

**Sylvia Basilious**  
Assistant Curriculum Team Leader for Modern Foreign Languages

## Onatti Theatre

Thanks to the Friends of Saint Cecilia's, Year 8 and 9 were treated to a play in French, 'La Maison Hantée' put on by Onatti Theatre Productions. It was supposed to be a scary play, but the actors regularly broke out of character when things went wrong and turned this haunted play into a hilarious farce.

We had two pupil volunteers who practised their impressive French skills on stage, **Oscar HG** and **Cristina V**, both in Year 9. **Cristina V** said afterwards, "La Maison Hantée' was excellent; the actors were brilliant and the pupils were engaged and really enjoyed the play!"

According to **Joel L** (Year 9), "The play was very fun. For two people it was very impressive and I liked it because it was about a haunted house and that is one of my favourite genres."

**Omara Muñoz Asensio**  
Curriculum Team Leader for  
MFL



## Library News

This week the Library has been looking at Empathy.

Empathy is described as the ability to experience and understand other people's feelings and points of view. When pupils/students identify with book characters, they learn to see things from others' view points.

Stories are a training ground for understanding other people's emotions: 'The empathy we feel for book characters wires our brains to have the same sensitivity towards real people.' (Prof Raymond Mar, York University, Toronto)

We have a wide range of books available in the Library that can help to develop empathy, some of which are currently on display.

**Rachel Goodhart**  
School Librarian



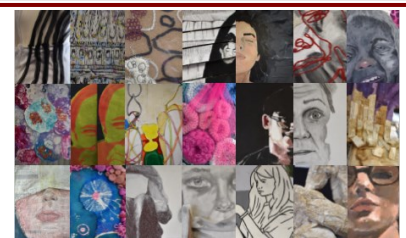
## Annual Summer Exhibition

A reminder to everyone that we are holding the Saint Cecilia's Art and Textiles GCSE and A Level Annual Summer Exhibition on Thursday 15th June, 4.30pm until 7pm in the Drama Room.

The exhibition showcases the work of our artists, and is the result of a two-year creative journey. Beautiful sculptures and installations will take their place next to detailed figurative paintings, drawings, prints, textiles and films.

The exhibition display ambitious, challenging and diverse artwork—there really is something for everyone. We hope you can come to celebrate their achievements with us. All are welcome!

**Stella Allan**  
Curriculum Team Leader for Art and Design



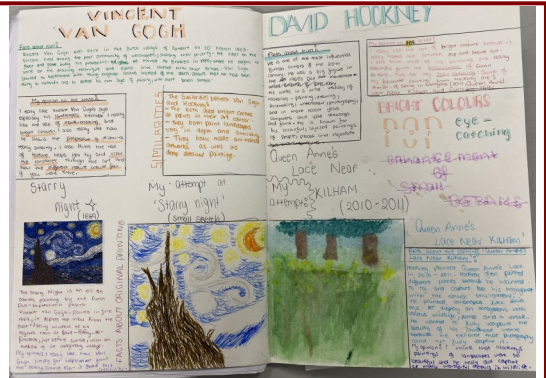
**Saint Cecilia's**  
Church of England School

You are invited to the  
**Art and Textiles**  
**Annual Summer Exhibition**  
Thursday 15<sup>th</sup> June 2023  
4.30pm – 7pm  
Drama Room

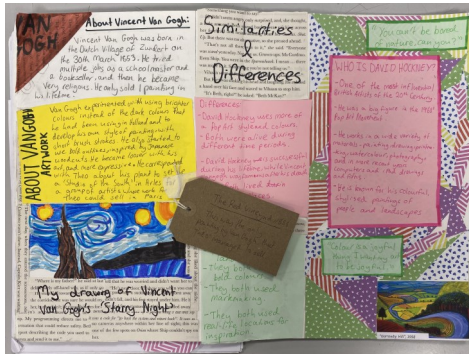
A private viewing to celebrate our exciting and thought provoking GCSE and A Level artwork.  
Enjoy refreshments and an interactive selfie booth too!

## Artist of the Week

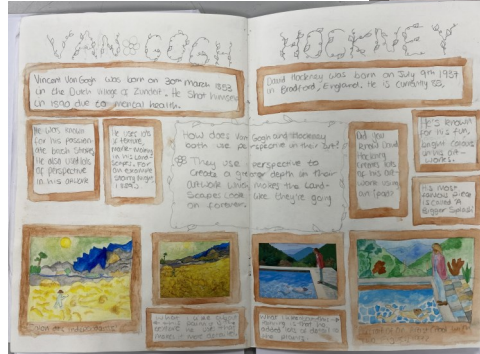
These three Year 8 pupils created fantastic artist research on Van Gogh and Hockney, linked to their project on landscapes. In the end, I couldn't choose just one pupil, so this week we have three Artists of the Week! Each pupil has presented their research, analysis and responses thoughtfully, analysing the similarities between the artists and using the style of the artist in their responses. Well done to **Jessie P**, **Lily T** and **Tehya R**.



**Tehya R**



**Jessie P**



**Lily T**

**Stella Allan**  
Curriculum Team Leader for Art and Design

## Sports News

### Athletics:

All four of our athletics teams have qualified for the next round of the English Schools' Athletics Cup competition. The competition will take place on Monday 12th June where they will compete against the best schools in London.

Fourteen of our Year 9-11 pupils have qualified for the London Schools' Athletics Event on Saturday 10th June where they will represent Wandsworth, thanks to their impressive performances at the Wandsworth athletics event last month.

Pictured right is **Siena G** in Year 8 performing brilliantly in the hurdles in our extra-curricular Athletics Club. The club takes place on Wednesday afternoons now that the track at Wimbledon Park is refurbished. This week, we had many Year 8s trying events including 300m, 800m, 100m, long jump, shot put and hurdles.



### Roundnet:

A new sport to many, roundnet it is a fast-growing sport in Europe which requires coordination, movement and communication. Year 8s and 10s have been playing it most lunchtimes. Below are some pictures of Year 8 pupils playing roundnet with their friends during breaktime. There have been roundnet trials after school this week too! We look forward to taking a selected group of Year 8-12s to the first ever London Schools' Roundnet Competition on 14th June.



**Harriet Field**  
Teacher of PE

## Open Events for Year 7 Admission for Sept 2024 Entry

This is a reminder that if you, your friends, family or neighbours are applying for a secondary school place for Year 7 entry in 2024, here are the dates of our open events.

[Thursday 29th June 9am - noon](#)

**Thursday 21st September 5 - 8pm**

**Tuesday 26th September 9am - noon**

**Tuesday 10th October 9am - noon**

These events will be ticketed so we can manage numbers of visitors in school. Tickets are free and bookable via Eventbrite. Our first event is available to book now, just click on the date above. We will open the booking for all other dates in June, when our new prospectus will also be published.

In the meantime, if you would like your child to be considered for a Foundation and/or Specialist Music place, you must also complete the supplementary information form(s). To complete these forms, use our [portal here](#). If you are unable to fill the form in online, please [contact our Admissions Manager](#) who will help you with this.

**Please note, if your child is a pupil at Saint Cecilia's with a Foundation place, you need to fulfil the same criteria and fill in the Foundation form on our portal to gain sibling priority for all subsequent applications.**

Please ensure that you apply for a Specialist Music place by **Monday 9th October 2023** and a Foundation place by **31st October 2023**. For information about Specialist Music and Foundation places, please see our [Admissions Policy for 2024/25](#).

Sally van der Meer  
Admissions Manager

## Enrichment Week 2023

A reminder that Enrichment Week 2023 is fast approaching!

Date	Year Group and Destination
Monday 17th July	Year 7 and Year 8: Chessington World of Adventures Year 9: The Imperial War Museum Year 10: Thorpe Park
Tuesday 18th July	Year 7 and Year 8: The Tower of London Year 9: Thorpe Park Year 10: The Imperial War Museum
Wednesday 19th July	Year 7 to 10: Sports Day at Wimbledon Park <i>*Pupils are required to wear their full PE kit on Sports Day</i>

### COSTS:

- For Year 7 and Year 8 pupils £30
- For Year 7 and Year 8 pupils (Pupil Premium) £15
- For Year 9 and Year 10 pupils £45
- For Year 9 and Year 10 pupils (Pupil Premium) £30

Thank you to all the parents and carers who have already paid via ParentPay. If you have not yet paid, please do so as soon as possible. Financial assistance is available where families are eligible for support. To find out more about this, please contact Miss Latesha Fleming via: [finance@saintcecilias.london](mailto:finance@saintcecilias.london).

To support anyone who may be experiencing financial hardship, families can make a donation via ParentPay to 'Enrichment Week Contribution' to 'sponsor' another pupil, so that they can take part in the activities. During the week, pupils should bring a packed lunch. If your child receives Free School Meals, the Refectory can provide a packed lunch for each day. Please indicate via ParentPay whether your child will want a packed lunch made for them where they qualify for Free School Meals. This needs to be indicated to us no later than Monday 3<sup>rd</sup> July.

Andrew Gillespie  
Assistant Headteacher



Historic Royal Palaces  
**Tower of London**

## Upcoming Event Reminders

- **Tuesday 13th June:** Year 8 and 9 BFI Southbank Study Day from 9.30am - 4pm
- **Tuesday 13th June:** Summer Festival: Jazz Band to perform at the Wandsworth Civic Centre from 4pm
- **Wednesday 14th - 16th June:** DofE Silver assessed expedition (Year 10)
- **Wednesday 14th June:** Music trip to the National Opera Studio for selected pupils in Years 9 and 10
- **Thursday 15th June:** Annual Summer Art Exhibition 4.30 - 7pm in the Drama Room
- **Wednesday 21st June:** Year 8 BFI Southbank Study Day from 9.30am - 4pm
- **Wednesday 21st –23rd June:** DofE Silver assessed expedition (Year 11)